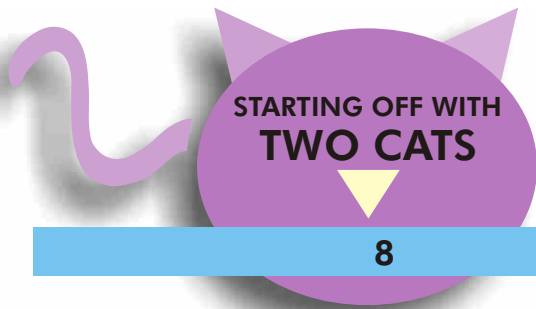
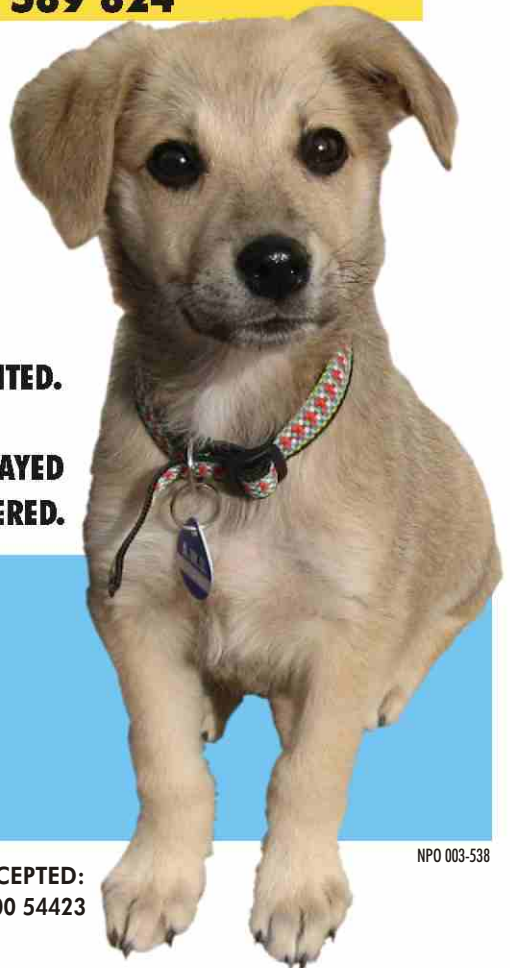
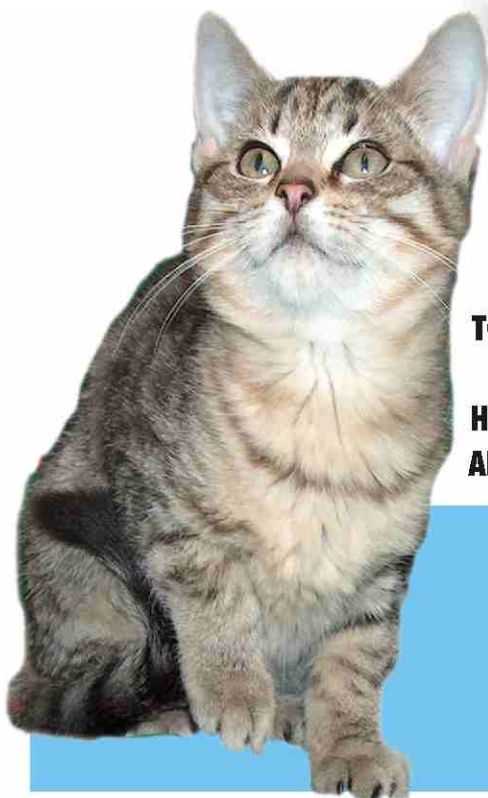


# PUPPY & KITTEN OVERPOPULATION



8	FIRST YEAR	4
32	SECOND YEAR	12
128	THIRD YEAR	36
512	FOURTH YEAR	144
2 048	FIFTH YEAR	576
8 192	SIXTH YEAR	2 304
32 768	SEVENTH YEAR	9 216
131 072	EIGHTH YEAR	36 864
524 288	NINTH YEAR	147 456
<b>2 097 152</b>	TENTH YEAR	<b>589 824</b>

this totals the parents plus ALL their descendants



**TOO MANY LAND UP UNWANTED.  
DO THE MATH.  
HAVE YOUR FEMALE PETS SPAYED  
AND YOUR MALE PETS NEUTERED.**



TEL 041 3661660/1. DONATIONS FOR SPAY CAMPAIGNS GRATEFULLY ACCEPTED:  
PO Box 5395, Walmer 6065 - First National Bank, Walmer 211217, Acc no 545 900 54423

NPO 003-538